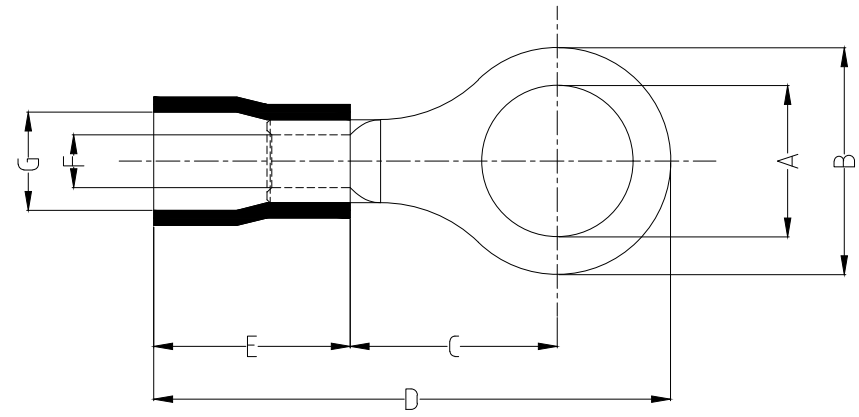
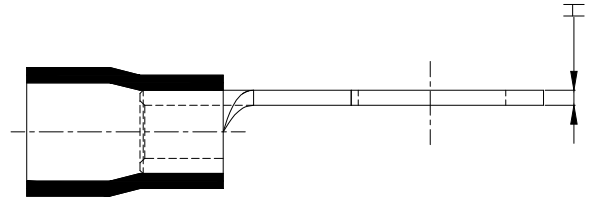


1 2 3 4 5 6 7 8

REV	LOCATIONS	DESCRIPTION	DATE	REVISER	APPD

Notes:

Material: Copper  
 Insulator: PVC (UL 94V-0)  
 Plating: Matte tin plated  
 Wire range: 1.5~2.5mm<sup>2</sup> / (16~14AWG)  
 Applicable screw: #10 UNC  
 Temperature Range-Operating: 0°C~75°C  
 Maximum electrical rating: 600V  
 Max current: 27A



Dimensions							
A	B	C	D	E	F	G	H
±0.3	±0.5	±1	±1	±1	±0.5	±0.5	±0.05
5.3	8.5	7.5	22.0	10.5	2.3	4.7	0.8

PART NO.	Color Of Insulator
FRT02-00200050SARD2	Red
FRT02-00200050SABU2	Blue
FRT02-00200050SABK2	Black

 THIRD ANGLE PROJECTION	GENERAL TOLERANCES (UNLESS SPECIFIED)		APPROVE BY	DATE	PART NO.	ITEM NO.	
	X. ±0.30	X.* ±5'	LEO	09/JAN/21			FRT02-00200050SAXX2
	DESIGN UNITS mm		CHECKED BY	DATE	TITLE Ring tongue terminal		
	X.X ±0.20	X.X' ±2'	GISELLE	09/JAN/21			
SCALE	SIZE	X.XX ±0.15	X.XX' ±1'	DRAWN BY	DATE	THIS DRAWING CONTAINS INFORMATION THAT IS PROPRIETARY TO TXGA INDUSTRIAL ELECTRONICS(S.Z)CO.,LTD AND SHOULD NOT BE USED WITHOUT WRITTEN PERMISSION	
5:1	A4	X.XXX ±0.10	X.XXX' ±0.5'	PYD	09/JAN/21		

 Building Technology Cornerstone		REV 0	SHEET NO. 1/1
-------------------------------------	--	-------	---------------

1 2 3 4 5 6 7 8